

Durham Close West Wimbledon, SW20 0QJ

£500,000 Leasehold

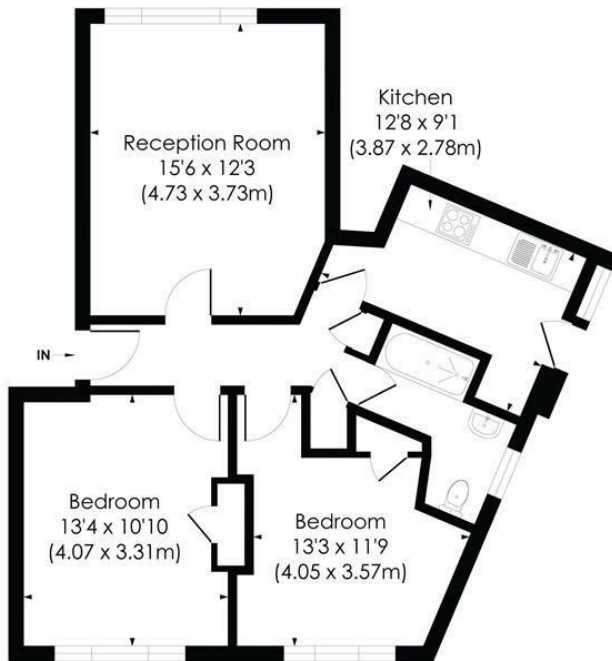


This beautifully presented TWO DOUBLE BEDROOM, ground floor Art Deco Apartment is perfectly located for both Raynes Park High street and Station. There is a spacious reception room, two good sized bedrooms, and a modern kitchen and bathroom. Offered to the market with no Onward Chain.

DURHAM CLOSE, SW20

Approx. Gross Internal Floor Area

682 Sq. ft/63.35 Sq. m



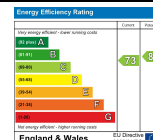
GROUND FLOOR

pixangle
PROPERTY MARKETING

This floor plan has been prepared for the purpose of illustration only in accordance with the latest RICS code of measuring practice and is not to scale. All measurements and areas are approximate and whilst every effort has been made to ensure the accuracy of the plan contained here, no responsibility is taken for any error, omission or misstatement.

© Pixangle Property Marketing Ltd. info@pixangle.com Tel: 0208 870 2118

- Two Double Bedroom
- Ground Floor "Art Deco" Apartment
- Modern Kitchen and Bathroom
- 0.1 Mile to Raynes Park High Street
- Entry Phone System
- Long Lease
- Beautifully Presented Through Out
- Chain Free
- EPC Rating - C
- Council Tax - C



For Free Mortgage Quote and Best Mortgage Rates, call Ellisons Mortgage Advisor on 0208 944 9595



Although these particulars are believed to be correct, their accuracy is not guaranteed and they do not form part of any contract.

Celebrating 30 years
of successful Sales and
Lettings in Merton

